

COLOR DOME CAMERA

DCC-520D

**620TVL, DNR
Day & Night**

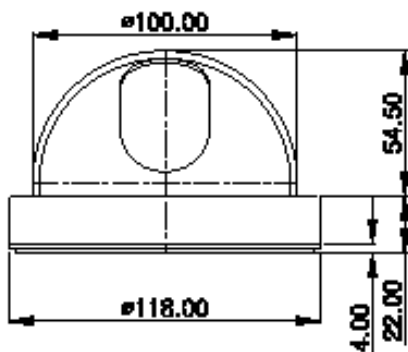
Features

- 410K Pixel Sony 1/3" HAD CCD
- High Resolution of 620TV Lines
- Built-in fixed lens (3.6mm)
- 4 Privacy Zones, Motion Detection
- Day & Night, BLC, AGC, White Balance, White Defect Restoration
- OSD (On Screen Display) Menu

Picture



Dimensions



unit : mm

Specifications

MODEL	DCC-520D	
Signal system	NTSC	PAL
Image sensor	1/3" Sony super HAD CCD	
Total pixels	811(H)X508(V)	795(H)X596(V)
Effective pixels	768(H)X494(V)	752(H)X582(V)
Resolution	More than 620 TVL	
Scanning frequency	15.734KHz(H), 60(V)	15.625KHz(H), 50(V)
Shutter speed	1/60~1/100,000 sec	1/50~1/100,000 sec
Minimum illumination	0.1Lux @F1.2	
Mirror	On / Off	
Shutter	Fixed / Manual / Flickerless	
White balance	ATW / Manual / AWB / Fixed	
DNR	On / Off	
BLC	On / Off	
Day & Night	On / Off / Auto	
Privacy zone	4 Zones	
AGC	On / Off	
Camera ID	On / Off	
Language	English / Japanese / Chinese	
S/N ratio	More than 50dB	
Video output	Composite video output 75Ω terminated	
Lens	3.6mm	
Sync. system	Internal	
Operating humidity	30 % ~ 90 % RH	
Operating temperature	- 10°C to 50°	
Dimension	76.5mm(H) X 100Ø	
Weight	About 340g	
Power consumption	Max 1.8W	
Power supply	DC 12 V(10.2V~14.5 V)	